

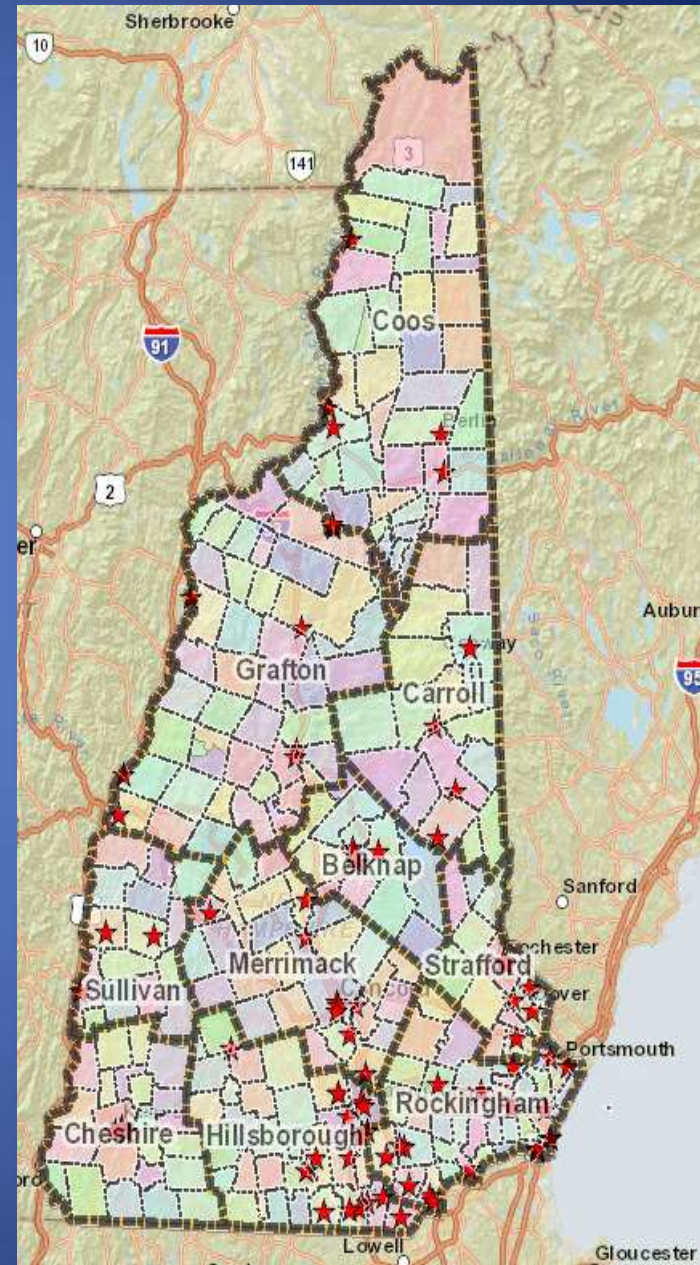
New Hampshire IT Council GIS Collaboration

April 29, 2016

Concord, NH

Division of Emergency Services and Communications (DESC)

- Operates NH E9-1-1 System
- Interacts with 234 Cities and Towns to maintain statewide Master Street Address Guide (MSAG), Street Address Guide (SAG), and Telephony Databases
- Maintains Communication Linkage with 70-24 Hour Dispatch Centers
- Provides GIS data and Mapping services to local, regional and state, Police, Fire and EMS agencies
- Provides GIS support to State Emergency Operations Center (SEOC)
- Operates NHVIEWWW



GIS in New Hampshire Government

- Alive and productive
- A comprehensive business tool for agencies to utilize in achieving their:
 - Legislative mandates
 - Executive goals
 - Overall Service to Citizens and Visitors of NH
- Ahead of many states
 - without the headlines!

GIS Coordination among State Agencies

- Public Utilities Commission
 - Data Migration to GIS (Telecom, Electric, Gas)
- HSEM-Hazard Mitigation
 - Integrating and Migrating Federal, State, Regional and Local Hazard Mitigation Data into GIS
- NH Trails Bureau
 - Trail Data Collection and Mapping
- NH Forest and Lands
 - Fire Tower Map Modernization
 - State Park Addressing
- NHDOT
 - Shared statewide imagery purchase 2010 and 2015
 - Joint Development of a Road Closure application
- DHHS
 - Geocoding Services and web service hosting
- Department of Corrections
 - Parole and Probation Layer
- Department of Environmental Services
 - Dams
 - Drinking Water Systems
 - Waste Water Treatment Facilities
- Department of Revenue
 - Provides Statewide parcel layer to multiple agencies
- NH Executive Branch
 - Health Care Access for State Employee contract negotiations
- NH National Guard
 - NH Military Location Safety & Security

GIS Coordination among Local Agencies

- 234 Cities and Towns plus 25 Unincorporated Areas
 - Road and address data and maps
 - Special Event/Purpose Maps
 - Training and Exercise support
 - Coordination with NHDOT and Local Nodal Map synchronization
- Public Safety Dispatch Centers
 - Road and address data and maps
 - Special Event/Purpose Maps
 - Radio Transmitter Analysis
 - Mutual Aid Coordination maps
- Local School Districts
 - Exchange of Floor Plans and assisting Schools with the development of Emergency Response Locations(ERL's)
 - Which zone of the school is the emergency call originating from?
- Regional Planning Commissions
 - When authorized by the Town

Emergency Operations Center Support

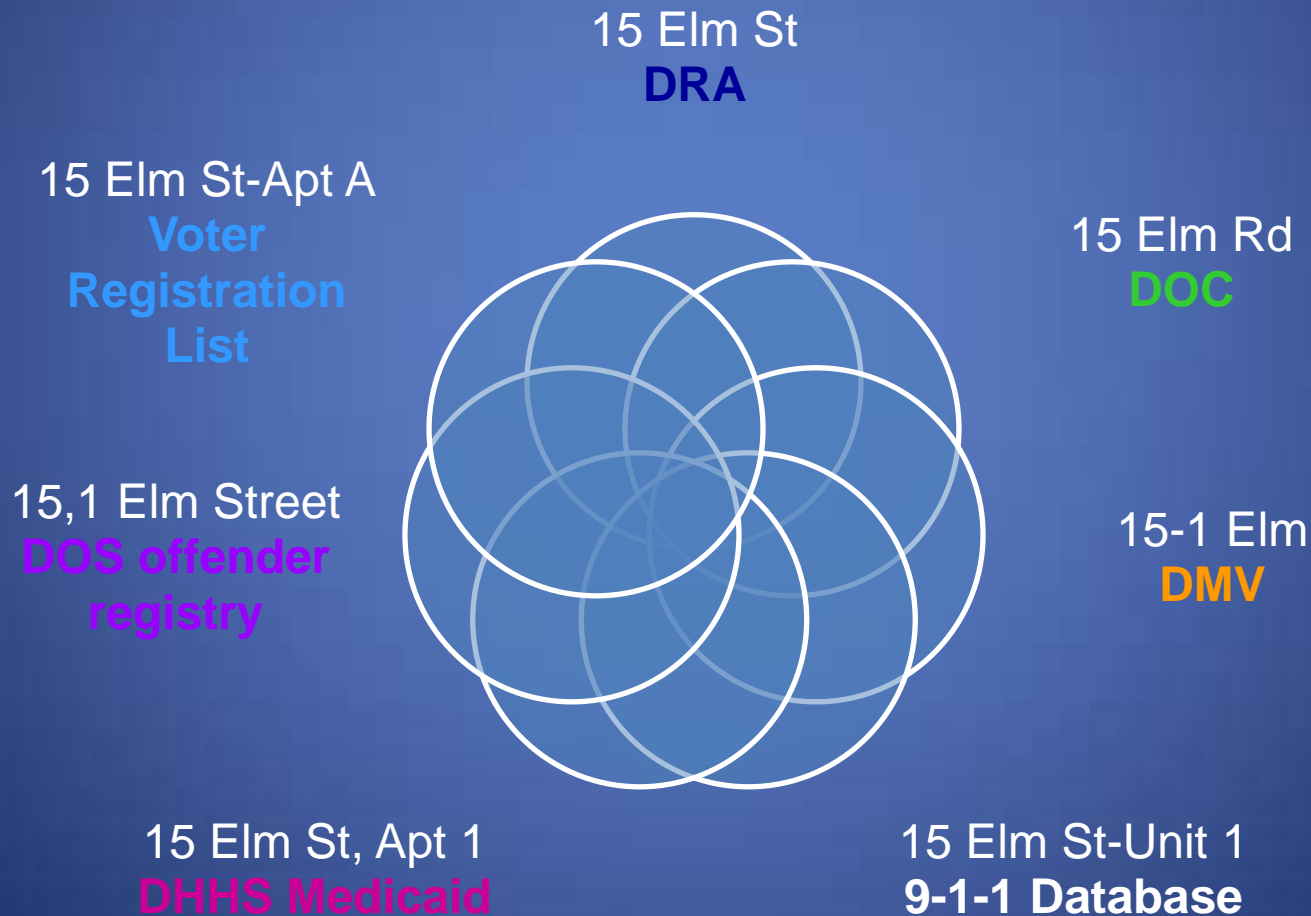
- Create visual display of situations/conditions
 - Power Outages
 - Developed method to display accurate power outages by town and company.
 - Tornado Path
 - Schools Closed
 - Roads Closed
 - Developed Road Closure Application that uses 9-1-1 Roads to accurately create a road closure map
 - Used during hurricane outages to provide PUC with roads closed due to trees and wires down to facilitate faster restoration

NHVIEWWW

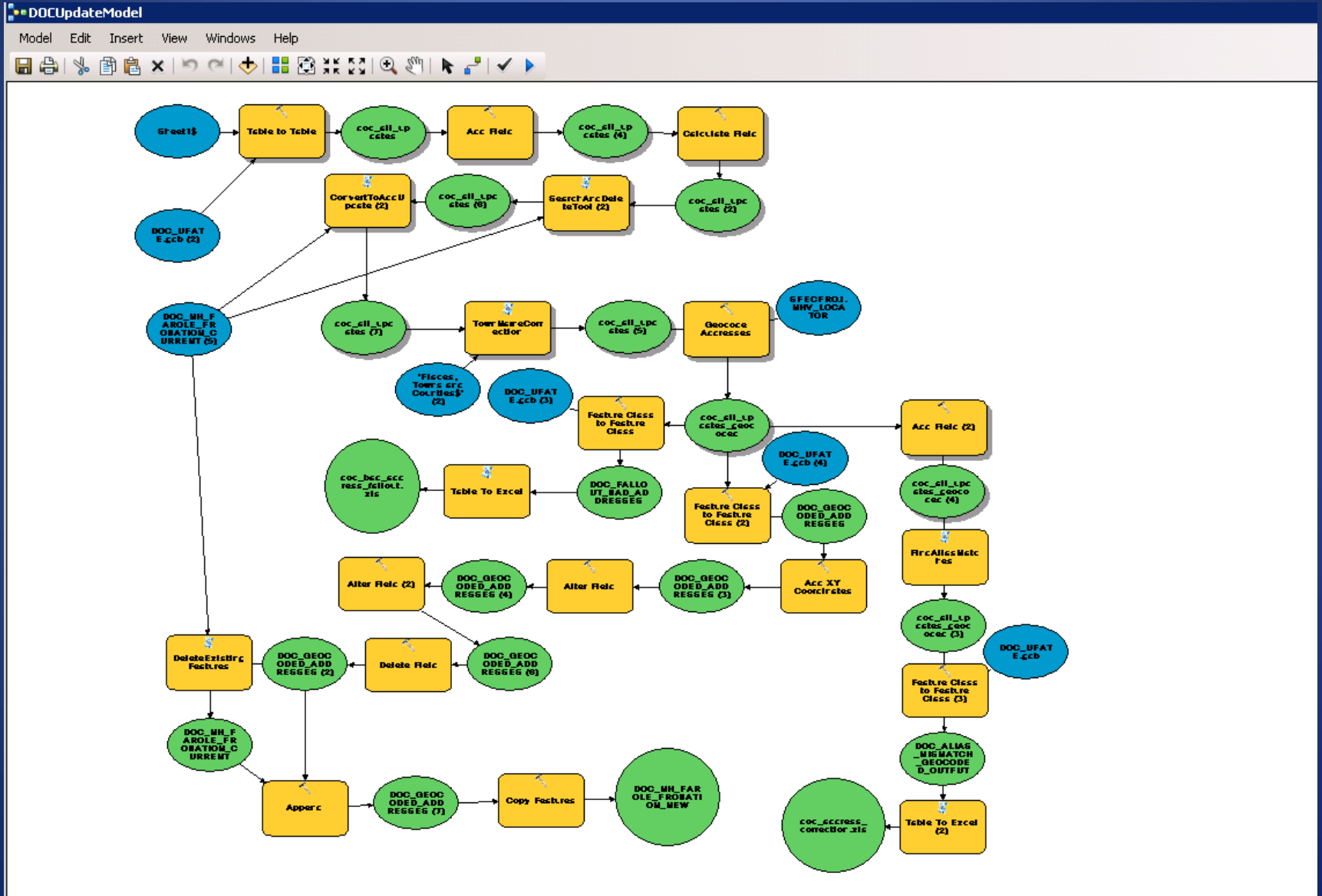
- NH Visual Information and Emergency Watch/Web
- A Geographic Information System (GIS) that integrates various data repositories, owners and services into a data store with web based visualization and analytical tools
- Designed to answer the question..... WHERE?
- Built on a platform address points, critical infrastructure and key resources

GOAL

1 Address.....used in separate state agency databases
(15 Elm St, apartment 1, Lancaster, NH)

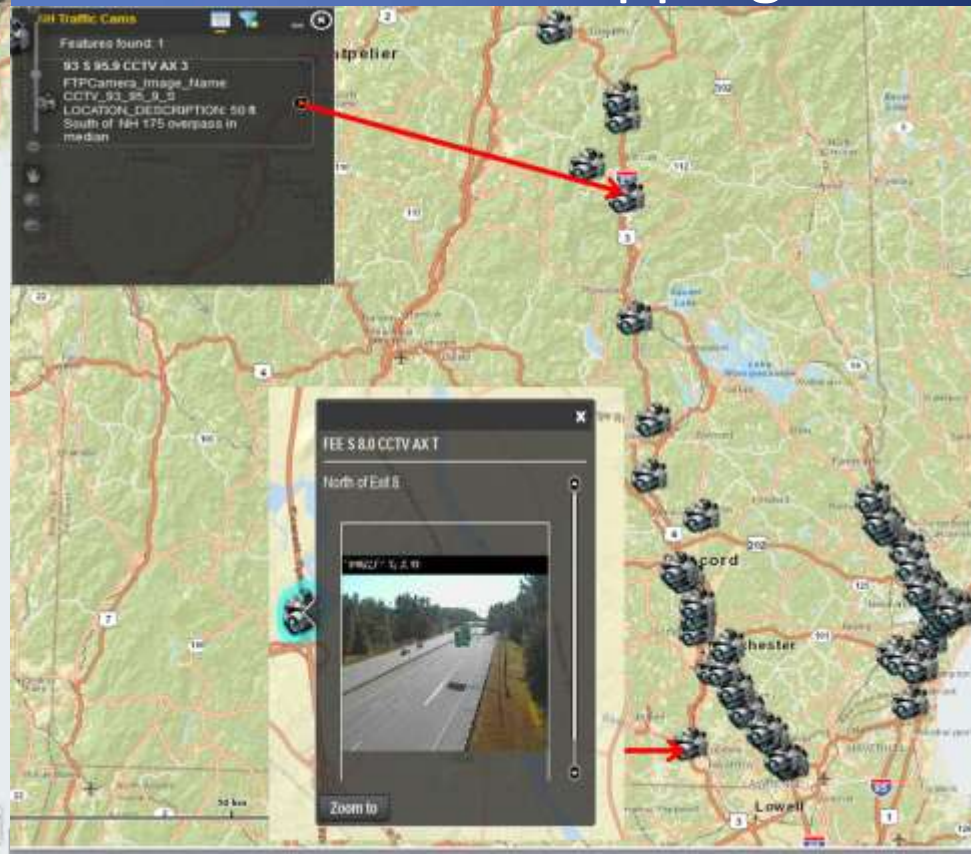
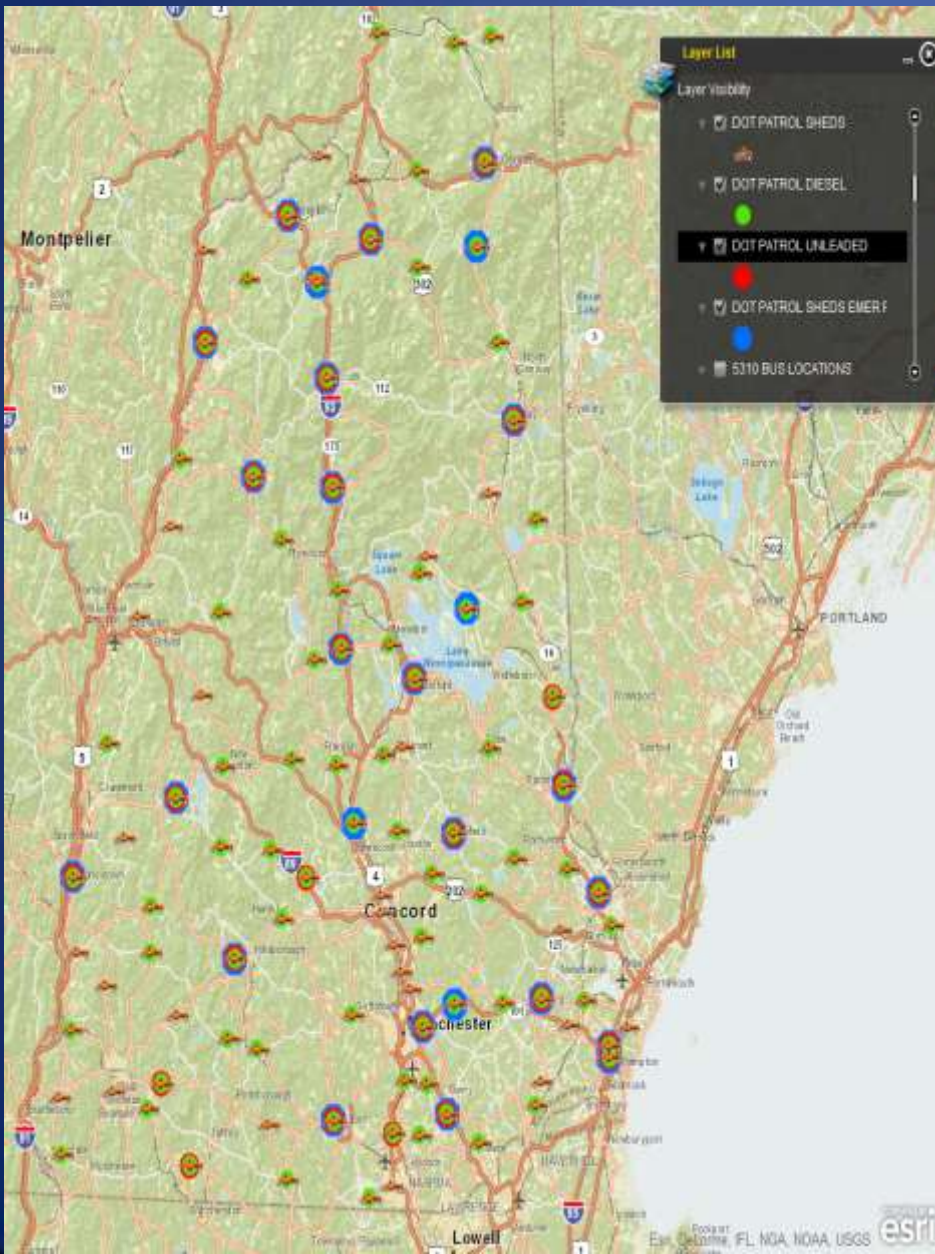


Automated Address GeoProcessing Models



ESF-1 Transportation

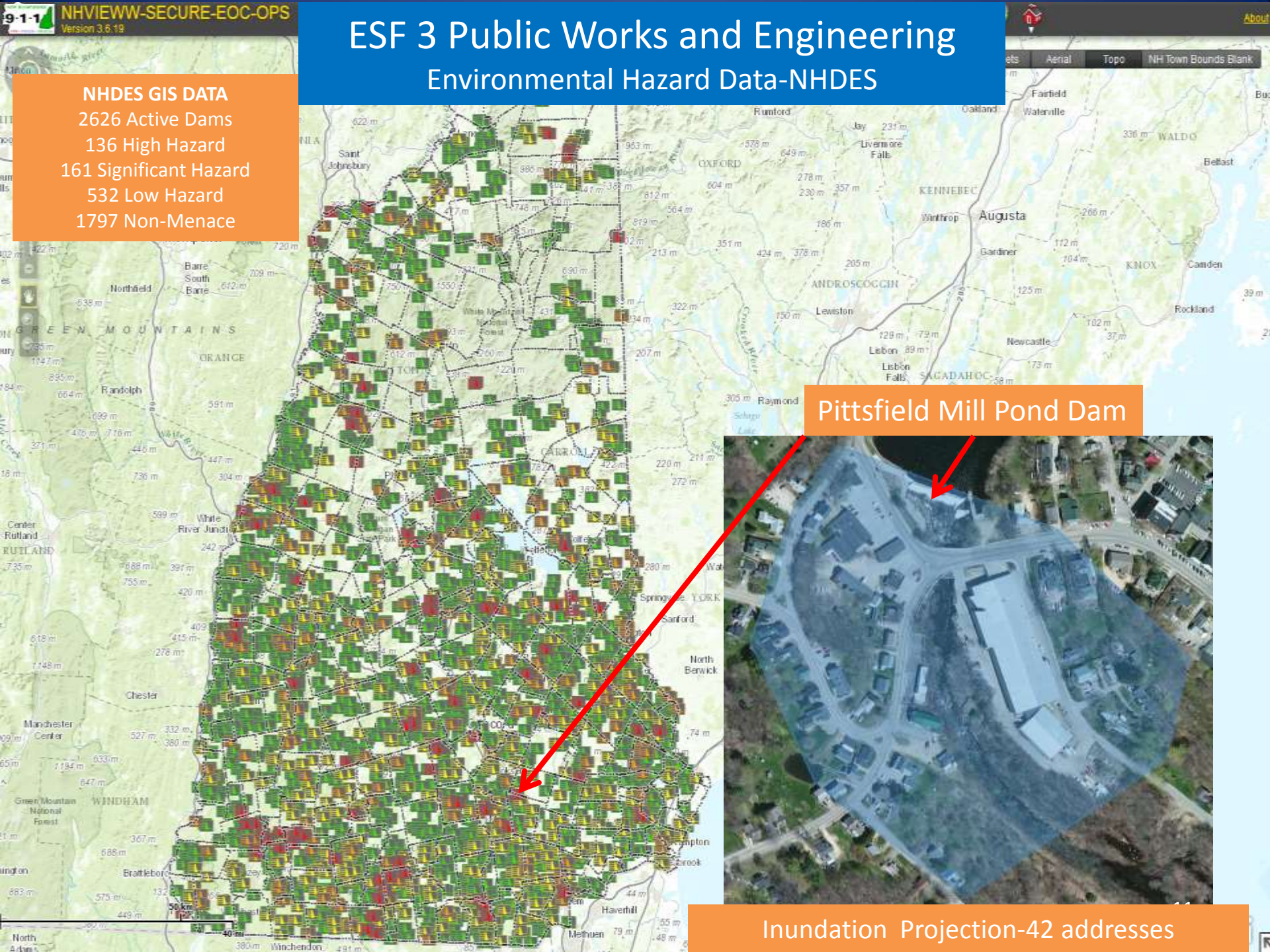
- DOT Summer and Winter Maintenance Layer-Active
- Traffic Camera Integration
- Road Closure Mapping



ESF 3 Public Works and Engineering

Environmental Hazard Data-NHDES

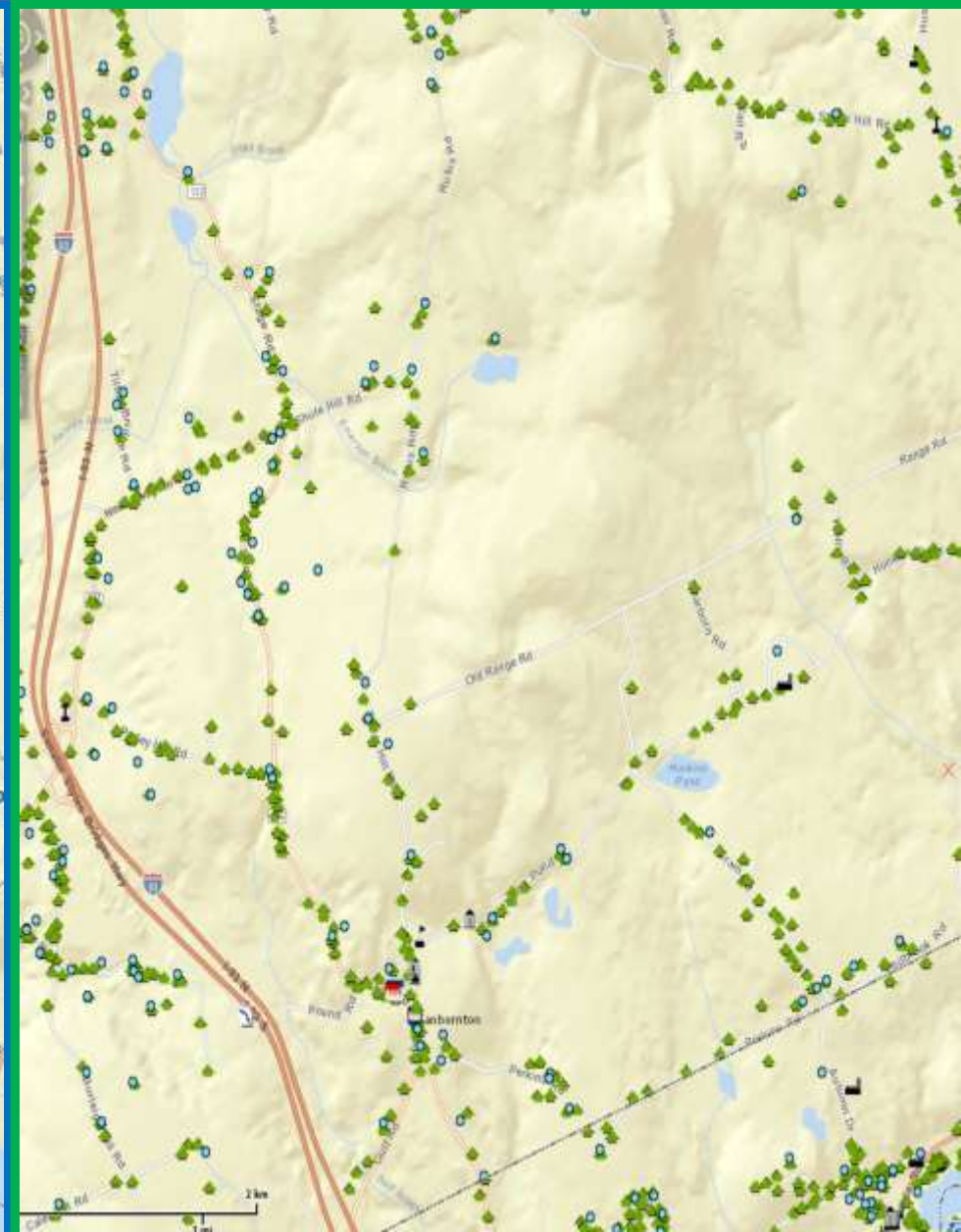
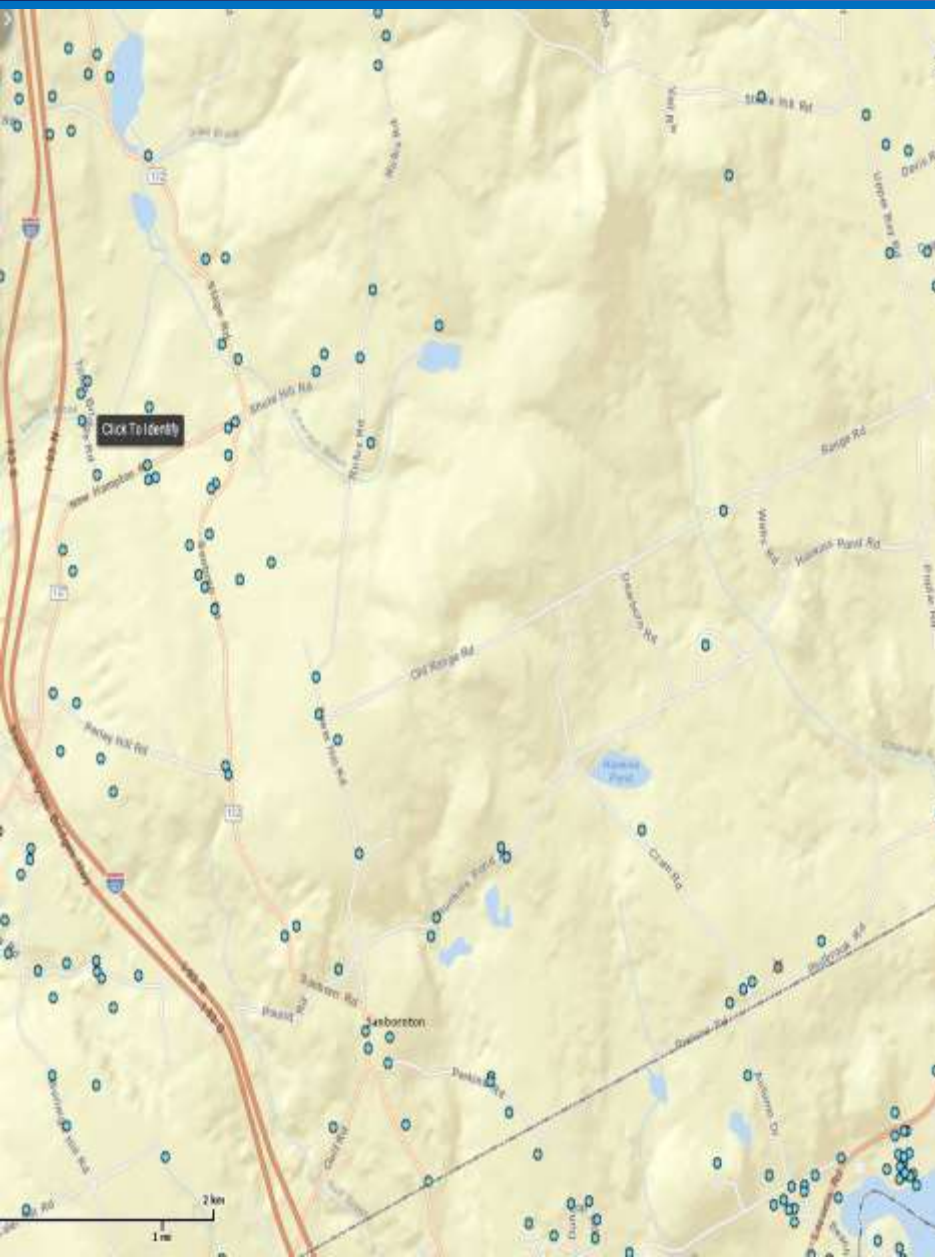
NHDES GIS DATA
2626 Active Dams
136 High Hazard
161 Significant Hazard
532 Low Hazard
1797 Non-Menace



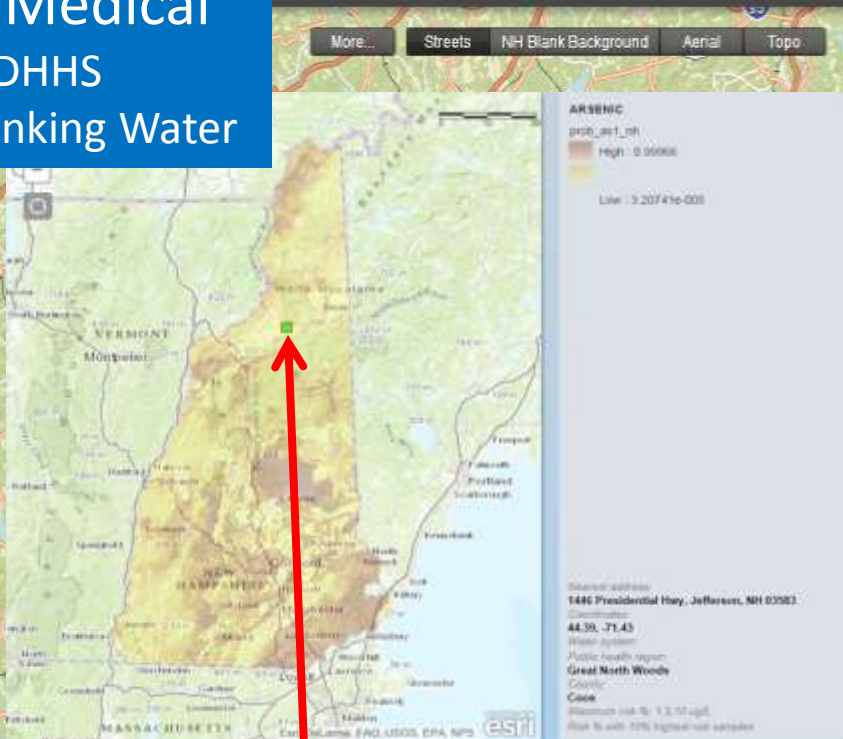
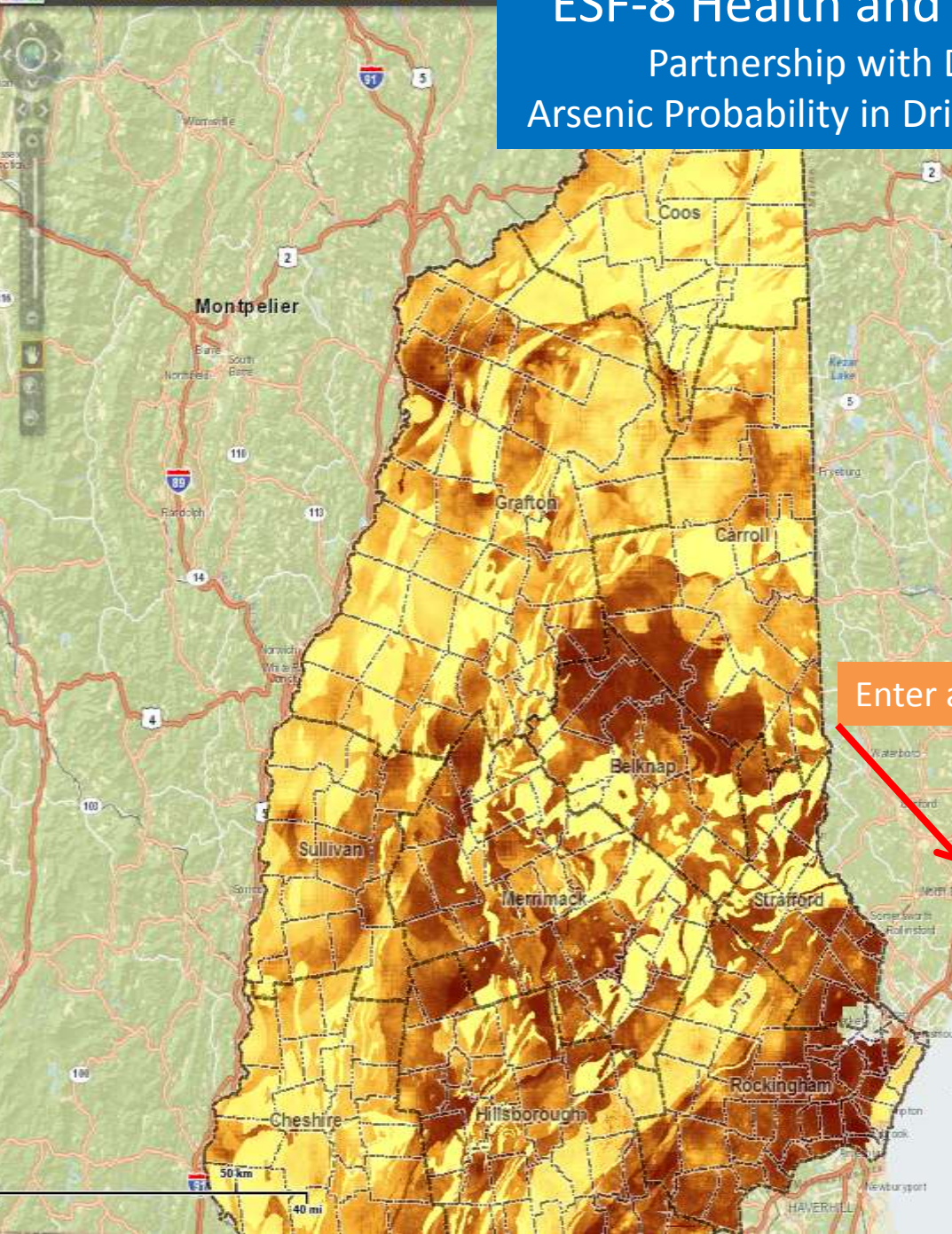
Pittsfield Mill Pond Dam

Inundation Projection-42 addresses

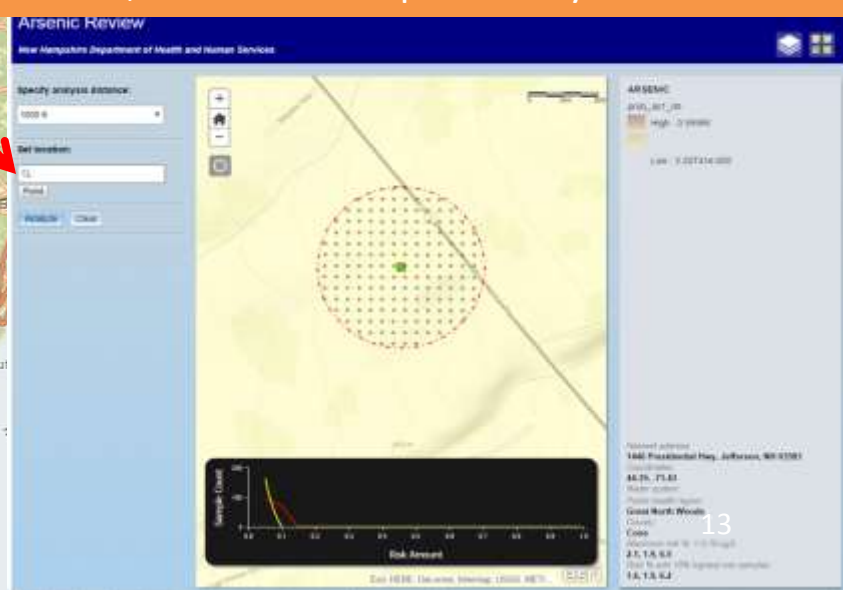
Well Inventory vs Addresses



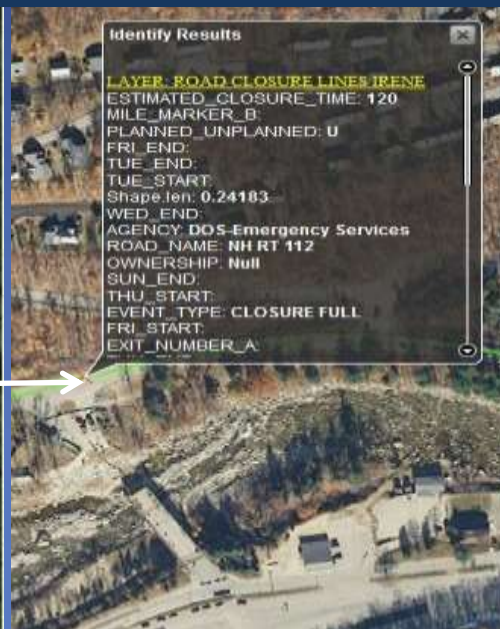
ESF-8 Health and Medical Partnership with DHHS Arsenic Probability in Drinking Water



Enter address, return arsenic probability in well water



Bridge to Loon Mtn

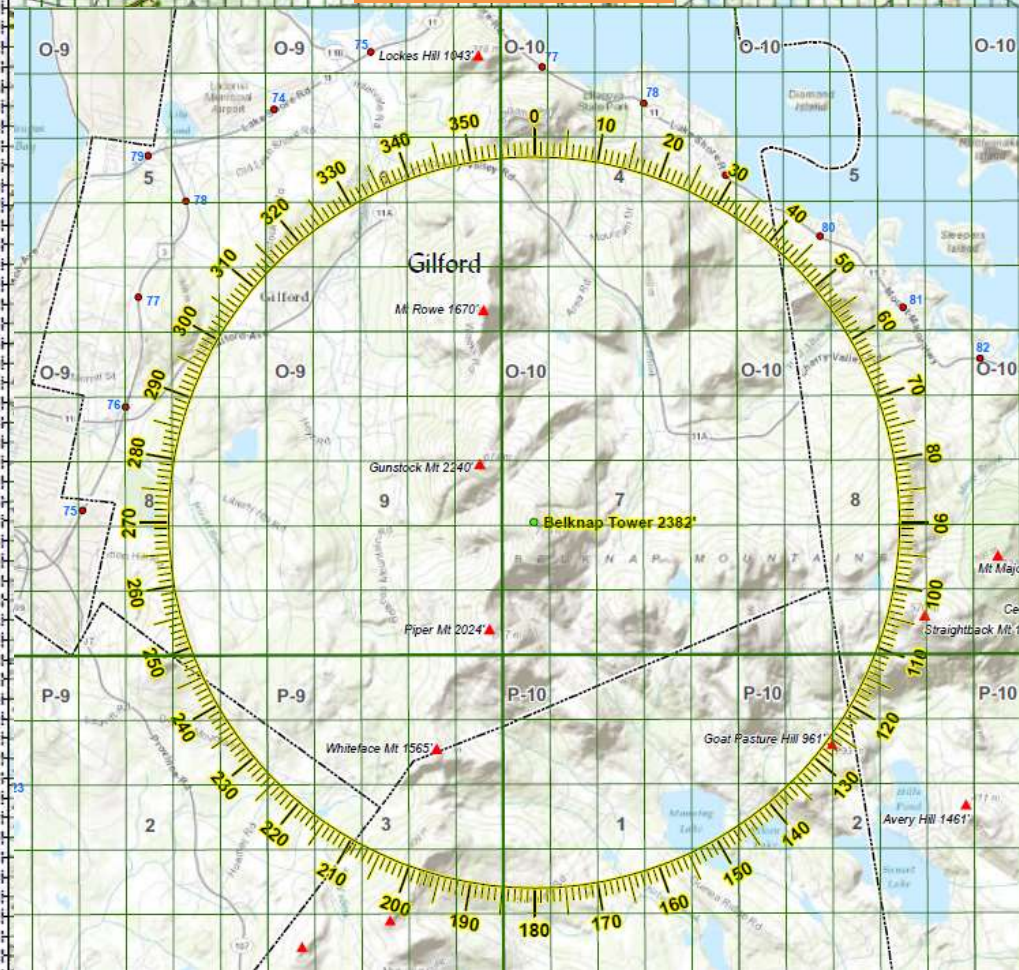


SEVERITY	QUALIFIERS	TOWN	ROAD_NAME	EVENT_TYPE	LOCATION	TYPE	START_DATE	TIME	END_DATE	TIME	BRIEF DESCRIPTION
CLOSED	Wires down	Alstead	GRANITE ST	CLOSURE FULL	ROAD		10/29/2012	16:59:51			Power lines down in road
CLOSED	Tree down/Wires down	Alstead	ALSTEAD CENTER RD	CLOSURE FULL	ROAD		10/29/2012	16:58:41			Tree on wires across road
CLOSED	Tree down/Wires down	Alstead	HOLLY HILL DR	CLOSURE FULL	ROAD		10/29/2012	21:53			Wetlock tree and wires down
5	CLOSED	Tree down/Wires down	Alstead	HOLLY HILL DR	CLOSURE FULL	ROAD		10/29/2012	21:48		Reason for Closure or Restriction Tree and wires down
7	CLOSED	Tree down/Wires down	Alstead	PINEWOOD DR	CLOSURE FULL	ROAD		18/09/2012	0:34		wetlock: 2022 tree/wires
8	CLOSED	Tree down/Wires down	Alstead	BLUESBERRY HILL RD	CLOSURE FULL	ROAD		18/09/2012	0:37		wetlock: 2023 tree/wires
											wetlock: 2021 tree/wires
9	CLOSED	Tree down/Wires down	Barrington	105 RT 285	CLOSURE FULL	ROUTE		16/09/2012	22:41		Large trees and wires down 16/09/2012 17:35:06
10	CLOSED	Wires down/Tree down	Dorset	LAKEVIEW AVE	CLOSURE FULL	ROAD		18/09/2012	0:30		wetlock: 2016 tree and powerlines down
11	CLOSED	Wires down/Tree down	Candia	CHESTER RD	CLOSURE FULL	ROAD		18/09/2012	0:57		wetlock: trees and wires in roadway
12	CLOSED	Tree On Wires	Cheshire	HAYFALL RD	CLOSURE FULL	ROAD		16/09/2012	23:11		wetlock: 1892
13	CLOSED	Tree down/Wires down	Cheshire	BEAR HILL RD	CLOSURE FULL	ROAD		18/09/2012	0:25		wetlock: 2013 multiple trees and wires down
14	CLOSED	Wires down/Tree down	Concord	CARTER HILL RD	CLOSURE FULL	ROAD		10/29/2012	20:25		21/01/2012 16:00:43 Tree down with wires Closed
15	CLOSED	Tree down/Wires down	Concord	OAK HILL RD	CLOSURE FULL	ROAD		10/29/2012	21:26		from wetlock: tree down with wires
											18/09/2012 18:54:42
16	CLOSED	Tree down/Wires down	Concord	BROWN POND RD	CLOSURE FULL	ROAD		10/29/2012	22:21		Reason for Closure or Restriction
17	CLOSED	Tree On Wires	Concord	184 RT 139	CLOSURE FULL	ROUTE		18/09/2012	1:23		Tree down with wires
											wetlock: 1852 tree on top of jersey tree
											06/29/2012 15:25:38
											Reason for Closure or Restriction
18	CLOSED	Tree down/Wires down	Dartmouth	SHIELDON RD	CLOSURE PARTIAL	ROAD		10/29/2012	22:36		Tree in road with wires
19	CLOSED	Tree down/Wires down	Dartmouth	1924 ST	CLOSURE FULL	ROAD		10/29/2012	22:48		Pole, wires, transformer down in road Transformer leaking fluid 10/29/2012 15:48:24
20	CLOSED	Tree down/Wires down	Dartmouth	184 RT 187	CLOSURE FULL	ROUTE		10/29/2012	18:48		20/01/2012 14:54:50 Down transformer pole down Wires across the Road
21	CLOSED	Tree On Wires	Doverfield	184 RT 43	CLOSURE FULL	ROUTE		18/09/2012	1:02		wetlock: 1917 tree into wires
22	CLOSED	Wires down/Tree down	Doverfield	GRiffin RD	CLOSURE FULL	ROAD		18/09/2012	1:28		wetlock: 2108 tree/wires across road
23	CLOSED	Tree On Wires	Derry	COMBES RD	CLOSURE FULL	ROAD		10/29/2012	20:12		upset from wetlock: trees in wires
24	CLOSED	Tree down/Wires down	Derry	QUILT RD	CLOSURE FULL	ROAD		10/29/2012	20:31		from wetlock: tree and wires
25	CLOSED	Tree down/Wires down	Derry	BEACON HILL RD	CLOSURE PARTIAL	ROAD		10/29/2012	21:52		
											18/09/2012 17:18:34
26	CLOSED	Wires down	Derry	184 RT 121	CLOSURE FULL	ROUTE		10/29/2012	21:16		Wires across road
											10/29/2012 17:22:34
27	CLOSED	Wires down	Derry	STARK RD	CLOSURE FULL	ROAD		10/29/2012	21:32		Reason for Closure or Restriction
28	CLOSED	Tree down/Wires down	Derry	HAMPSTEAD RD	CLOSURE FULL	ROAD		10/29/2012	23:38		Power Lines Hanging Across Road
29	CLOSED	Wires down	Derry	ALPES RD	CLOSURE FULL	ROAD		10/29/2012	23:34		wetlock: 1909 wires and trees
30	CLOSED	Tree On Wires	Derry	ENGLISH WEDGE RD	CLOSURE FULL	ROAD		10/29/2012	21:48		wetlock: 1915 wires across rd
31	CLOSED	Wires down	Dover	ENGLISH WEDGE RD	CLOSURE FULL	ROAD		10/29/2012	21:48		wetlock: 1912 tree into wires
32	CLOSED	Wires down	Dover	SUNSET DR	CLOSURE FULL	ROAD		10/29/2012	21:18		from wetlock: wires down 1728
33	CLOSED	Wires down/Tree down	Dover	GAR ST	CLOSURE FULL	ROAD		10/29/2012	21:32		from wetlock: wires and trees down 1718
34	CLOSED	Tree down/Wires down	Dover	MT VERNON ST	CLOSURE FULL	ROAD		10/29/2012	21:37		from wetlock: trees and wires 1713
35	CLOSED	Tree down/Wires down	Durham	DURHAM POINT RD	CLOSURE FULL	ROAD		10/29/2012	20:06		from wetlock: large tree power power lines two utility pole across rd
36	CLOSED	Tree down/Wires down	Durham	184 RT 158A	CLOSURE FULL	ROUTE		10/29/2012	20:15		21/01/2012 16:04:52 Tree & Wires Down Show DOT is Closing At This Time
37	CLOSED	Wires down	Durham	WILLEY RD	CLOSURE FULL	ROAD		10/29/2012	22:23		wetlock: 1828
38	CLOSED	Tree down/Wires down	Durham	BURRYBIDE DR	CLOSURE FULL	ROAD		10/29/2012	23:08		Closed due to trees and wires down
39	CLOSED	Tree down/Wires down	Epping	OLD NOTTAWHAM RD	CLOSURE FULL	ROAD		10/29/2012	23:48		Trees and wires down 10/29/2012 19:26:58
40	CLOSED	Tree down/Wires down	Goffstown	GRADY HILL RD	CLOSURE FULL	ROAD		10/29/2012	20:08		10/29/2012 16:48:21 tree on line and on fire
41	CLOSED	Tree down/Wires down	Goffstown	GRADY HILL RD	CLOSURE FULL	ROAD		10/29/2012	20:08		10/29/2012 16:48:21 tree on line and on fire
42	CLOSED	Tree down/Wires down	Goffstown	184 RT 118	CLOSURE FULL	ROUTE		10/29/2012	21:14		10/29/2012 17:49:44 Tree down in wires
43	CLOSED	Tree down/Wires down	Goffstown	WORY ST	CLOSURE FULL	ROAD		10/29/2012	21:08		Trees and wires down 10/29/2012 18:18:48

Fire Tower Map and Data Modernization

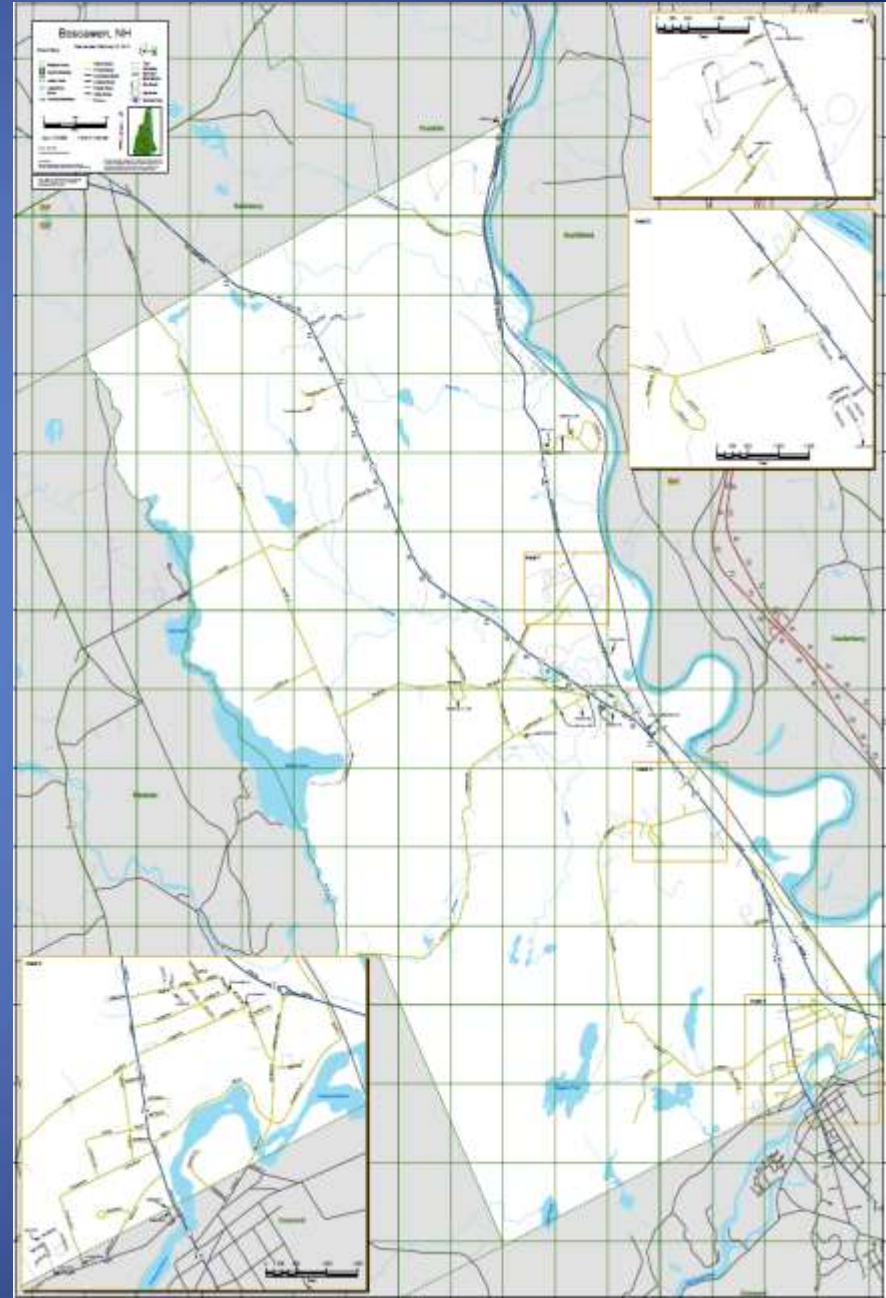
Belknap

NH Forestry Grid
(Quad/Block/Section)
Digitized for use in paper
and electronic maps



The power and efficiency of GIS and Public Safety

- Statewide Block and Section Grid
- Overlaid on Capital Area Dispatch
- Overlaid on Boscawen 9-1-1 Road Map
- 1 data grid used in multiple scales over single 9-1-1 data source

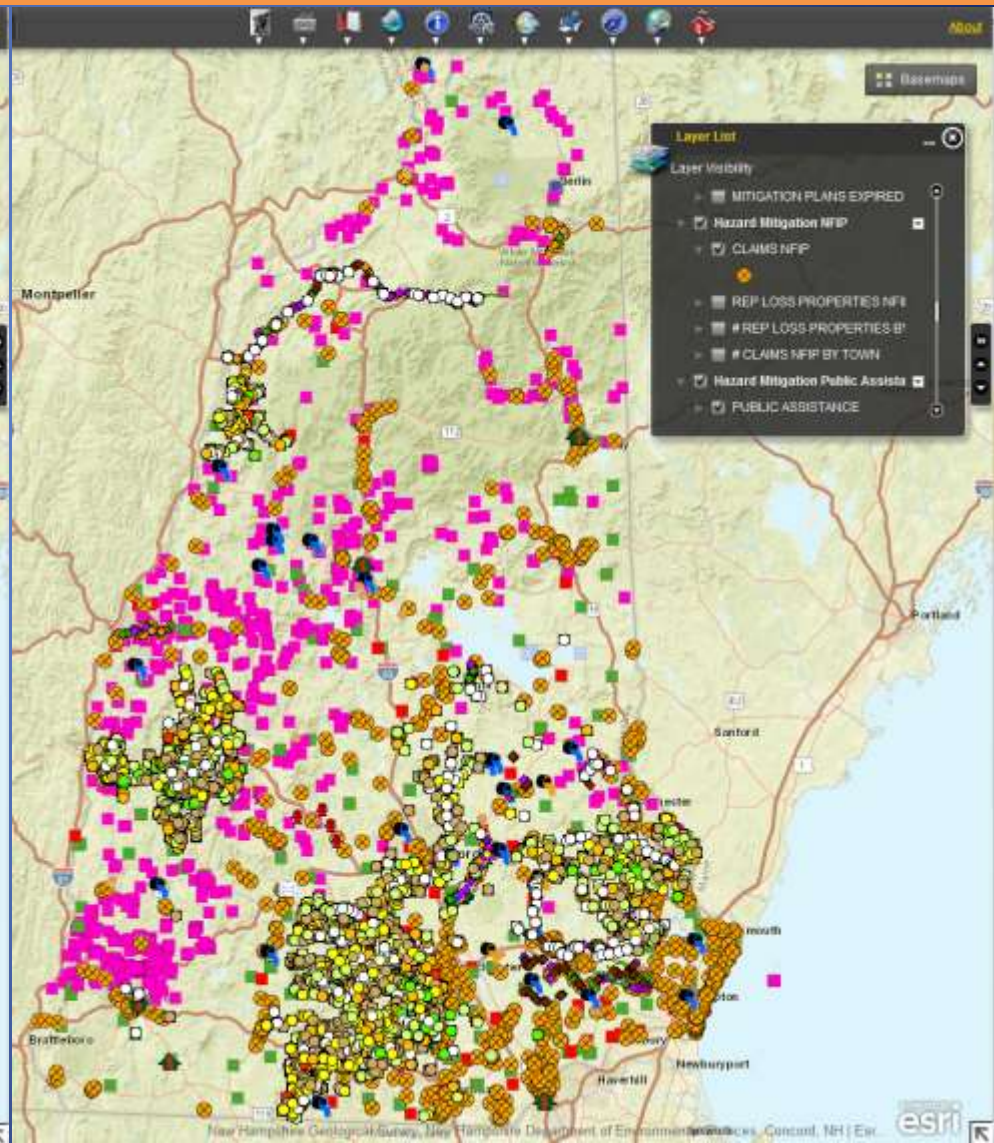
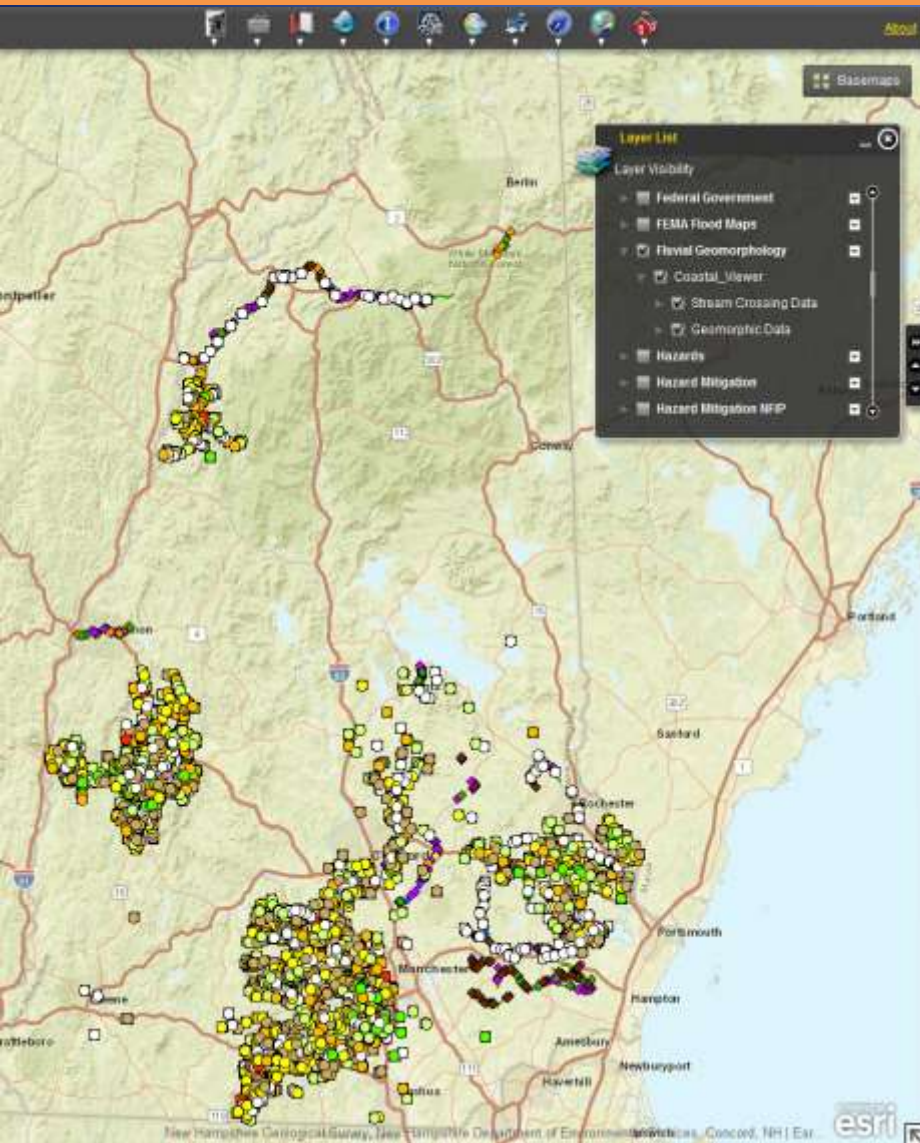


Dynamic Integration of Multi Agency data

Fluvial Geomorphology Map Service

&

Hazard Mitigation and Repetitive Loss Properties



NH Hazard Database Results

- Capacity to collect, manage, visualize and analyze hazard based mitigation data for the State of New Hampshire
- Provides a data and workflow model to tackle other relevant statewide data deficiencies
- Opens the door for more data driven decision making and advance awareness of situations as they unfold.

- 11.27.2014 1000H
- 11.27.2014 1300H
- 11.27.2014 1435H
- 11.28.2014 0730H
- 11.28.2014 0940H
- 11.28.2014 1315H
- 11.28.2014 1450H
- 11.28.2014 1700H

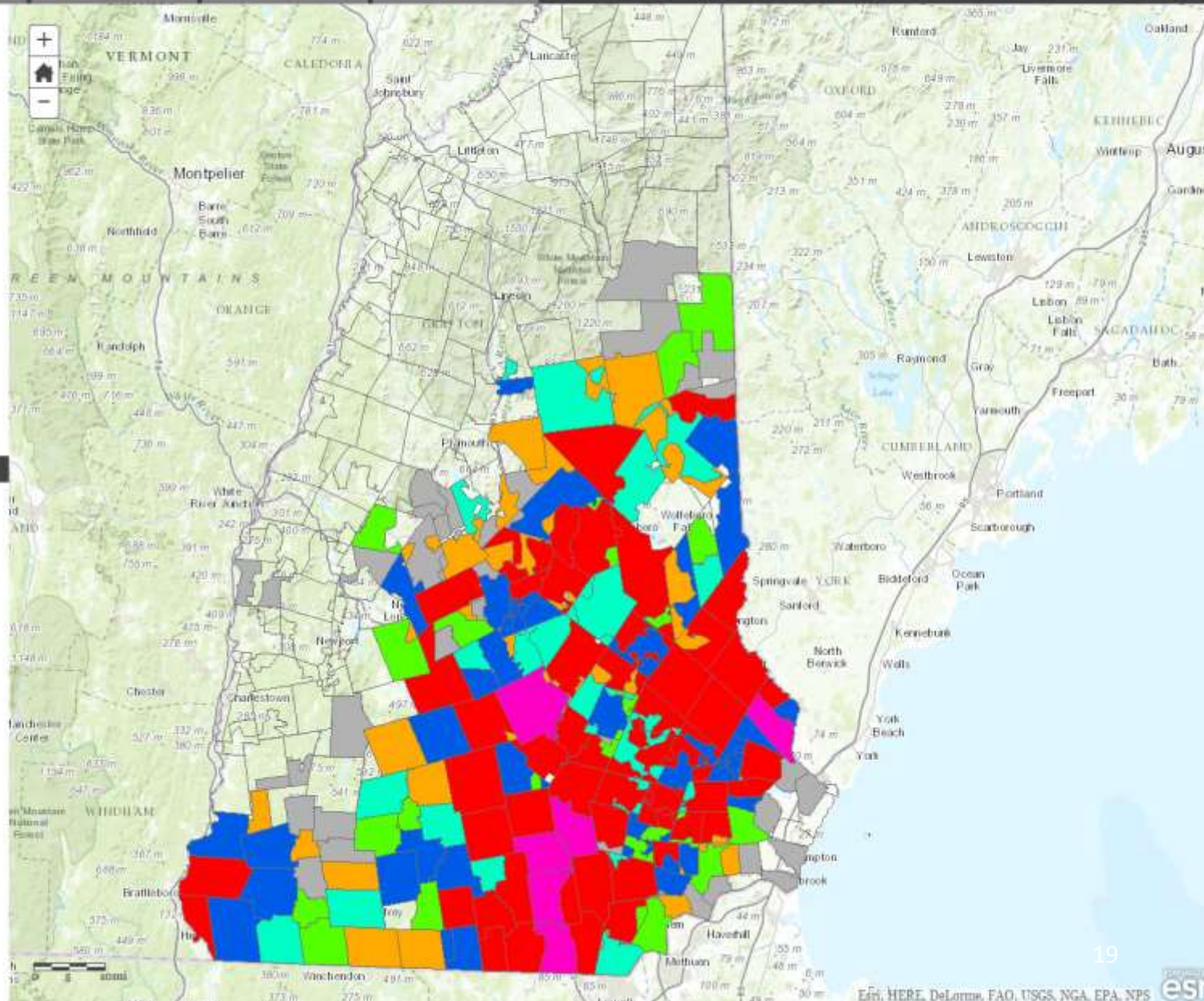
NH Outages 11.27.2014 1000 Hours

Clicking on a town polygon will provide a popup with detail information regarding the outages that occurred at this date and time, in that town.
[Go To This Map On Portal](#)

LEGEND

Power Outages Thanksgiving Storm
Outages 11.27.2014 1300 Hours

- 0
- 1 - 20
- 21 - 100
- 101 - 250
- 251 - 500
- 501 - 1000
- 1001 - 5000
- 5001+



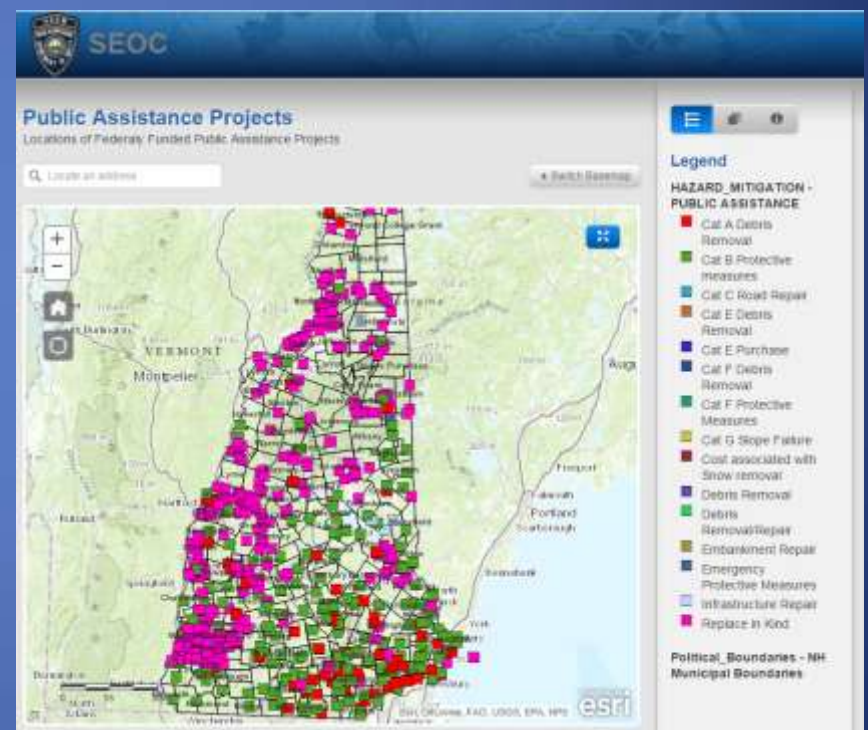
Where are we now?

- Contributed to the DOT flyover of 2015 imagery
- Address processing, validation and correction for statewide data sets
 - Parole and Probation
 - DOS Offender Registry
 - Public Health surveillance data geocoding
- Providing data and analytical support to First Net tasking for New Hampshire

School Safety and Security Maps



Web Base Maps suitable for embedding in Agency Web Pages



NHVIEWWW Agreements

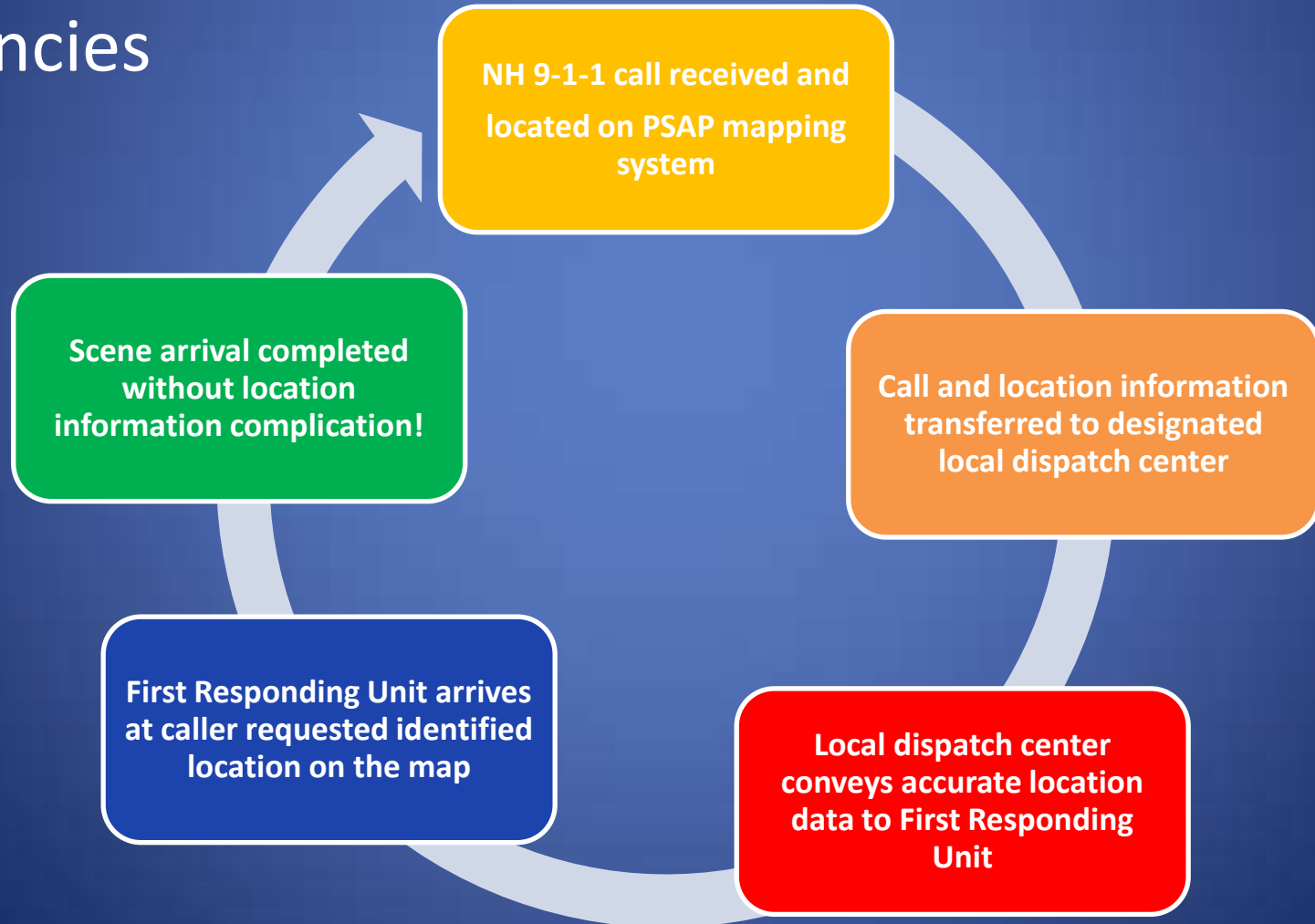
- Department of Health and Human Services
- Department of Corrections
- Department of Transportation
- Homeland Security and Emergency Management
- Division of State Police
- NH National Guard

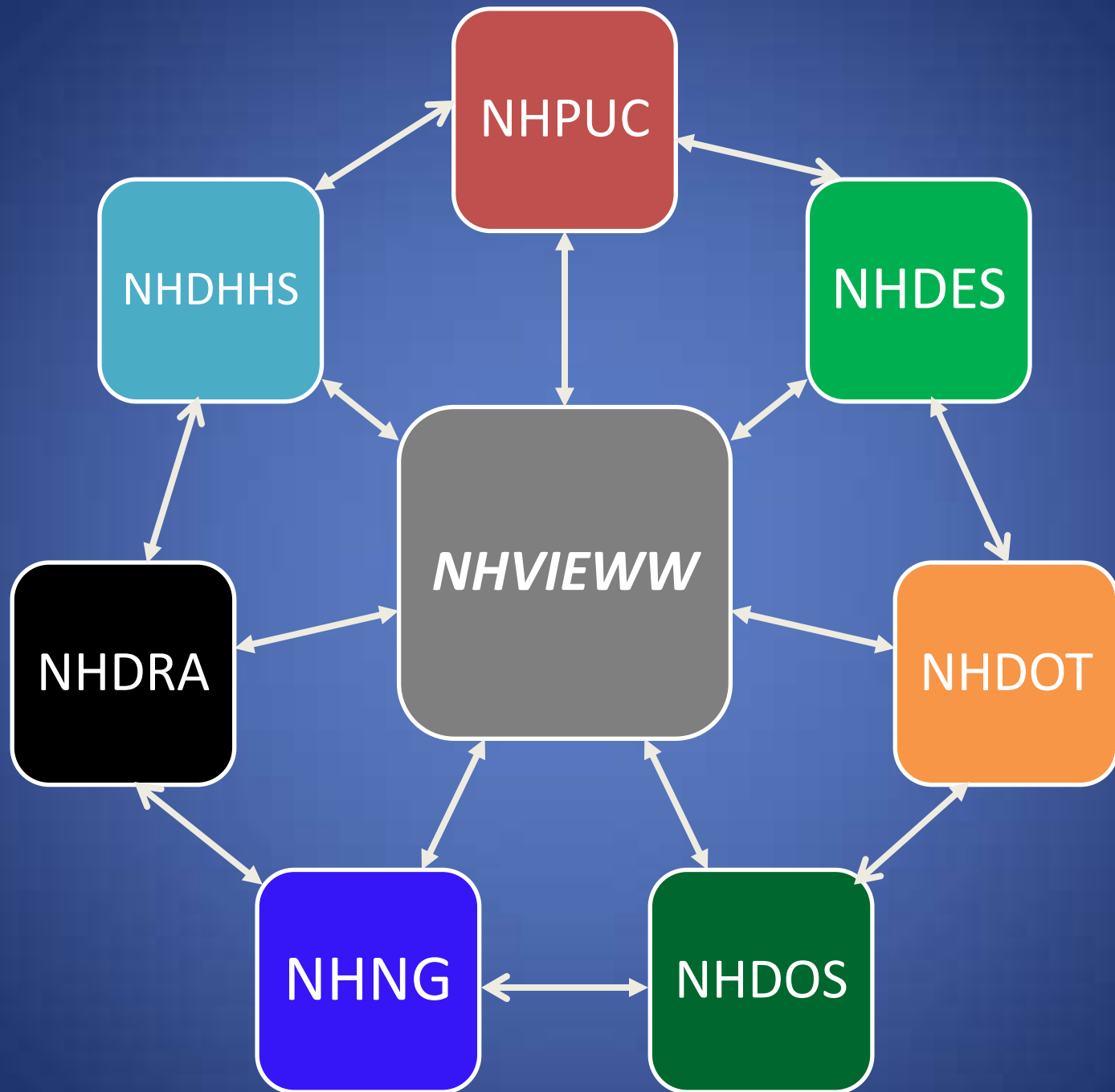
Conclusions

- There are mature GIS's in NH Agencies with talented professionals
- There is existing cooperation between agencies for maximum ROI
 - 2010 and 2015 NH Imagery Purchase
 - Many others described in this presentation
- Agencies without GIS are accessing and using their own data in Geographic form through NHVIEWWW
 - Department of Corrections
 - Multiple Department of Safety Divisions
- Agencies are leveraging NHVIEWWW services and infrastructure to improve data quality
- NHVIEWWW is a flexible, scalable and affordable platform to support all agencies in:
 - Day to day internal operations
 - Public information and agency GIS data access goals

Conclusion

- We are here to assist local first responders in the New Hampshire 9-1-1 continuum and.....state agencies





THANK YOU

Sean Goodwin

GIS Administrator

sgoodwin@e911.nh.gov



New Hampshire Department of Safety
Division of Emergency Services

