

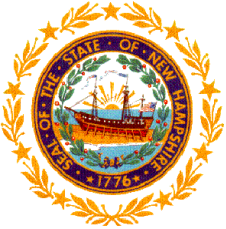
Geocortex Pilot Implementation

HB 377 GIS Committee
November 16, 2017



GIS Committee's Action Plan

2



Strategy #2

Objectives

- A. Pursue a long-term contract with a state GIS clearinghouse to:
 - i. Store, manage, and provide access to enterprise geospatial data sets
 - ii. Develop and promote task- and cost-appropriate tools to analyze and display data

- B. Increase outreach to all stakeholders to promote awareness and use of enterprise geospatial data sets

Areas of further exploration:

- Common GIS presentation tools and platforms that exist through vendor agreements
- Training opportunities to take full advantage of these platforms

Project Vision

- An 18-month, multi-agency collaboration.
- Deploy a scalable, statewide infrastructure.
- Help more people make better decisions.
- GIS technology simplified.

Project Activities

4

1. Survey state agencies to:
 - Establish current/future needs/capabilities/skill sets
 - Evaluate current/future computing infrastructure
2. Establish recommended standards for:
 - Map publishing, including map content, data layer naming, and metadata, as well as stylistic elements
 - Minimum data quality characteristics
3. Establish governance structure/documents to address:
 - User management
 - Software management
 - Site publication environment
 - Data hosting
4. Provide training and technical support

Project Highlights

5

- GeoCortex (<http://www.latitudegeo.com>) hosted by UNH Earth Systems Research Center (“ESRC”).
- Sharing of platform by up to 200 staff each at NH DOT and DES
- Training of 2 support staff each agency
- Support is tiered through escalation through ESRC then GeoCortex
- User management will be coordinated by ESRC

GIS for the Rest of Us

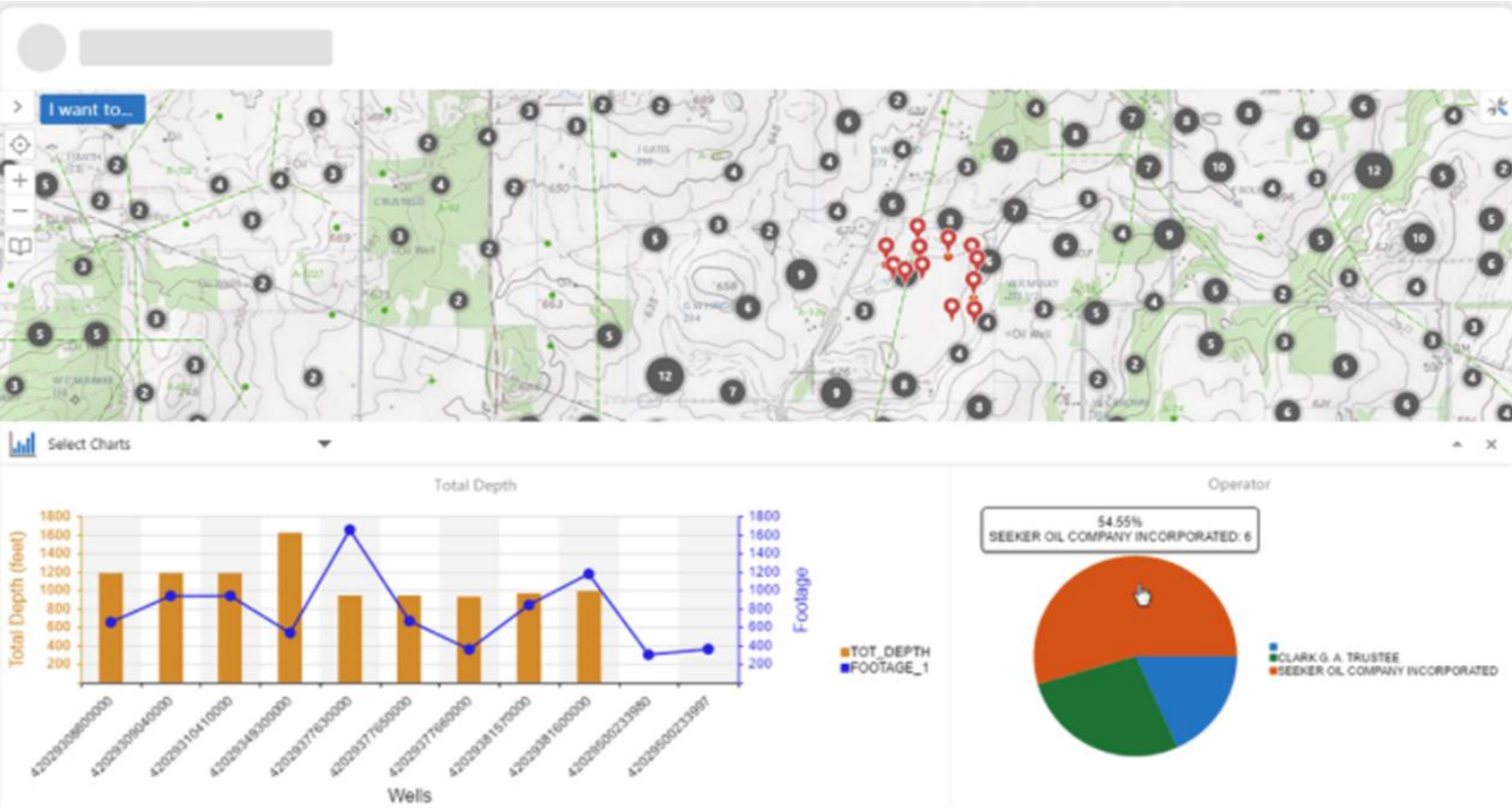
6

- Charting
- Forms
- Printing and Reporting
- Workflow
- Security through credentialing
- Integration
- Searching

CHARTING

[back](#)

7



<https://www.youtube.com/watch?v=HIY0LheYErA>



<http://nhdesonestop.sr.unh.edu/html5viewer>

FORMS

[back](#)

9

The image shows a screenshot of a GIS application interface. At the top, there is a navigation menu with tabs for File, Home, Map, Tools, and Workflow. Below the menu is a toolbar with various icons for different tools, including 'Parcels By Owner', 'School Parcel Search', 'Social Media Search', 'Drive Times', 'Profile Tool', 'Create Road Closures', and 'Route To Service Requests'. A dialog box titled 'Enter Attributes' is overlaid on the map, containing the following fields:

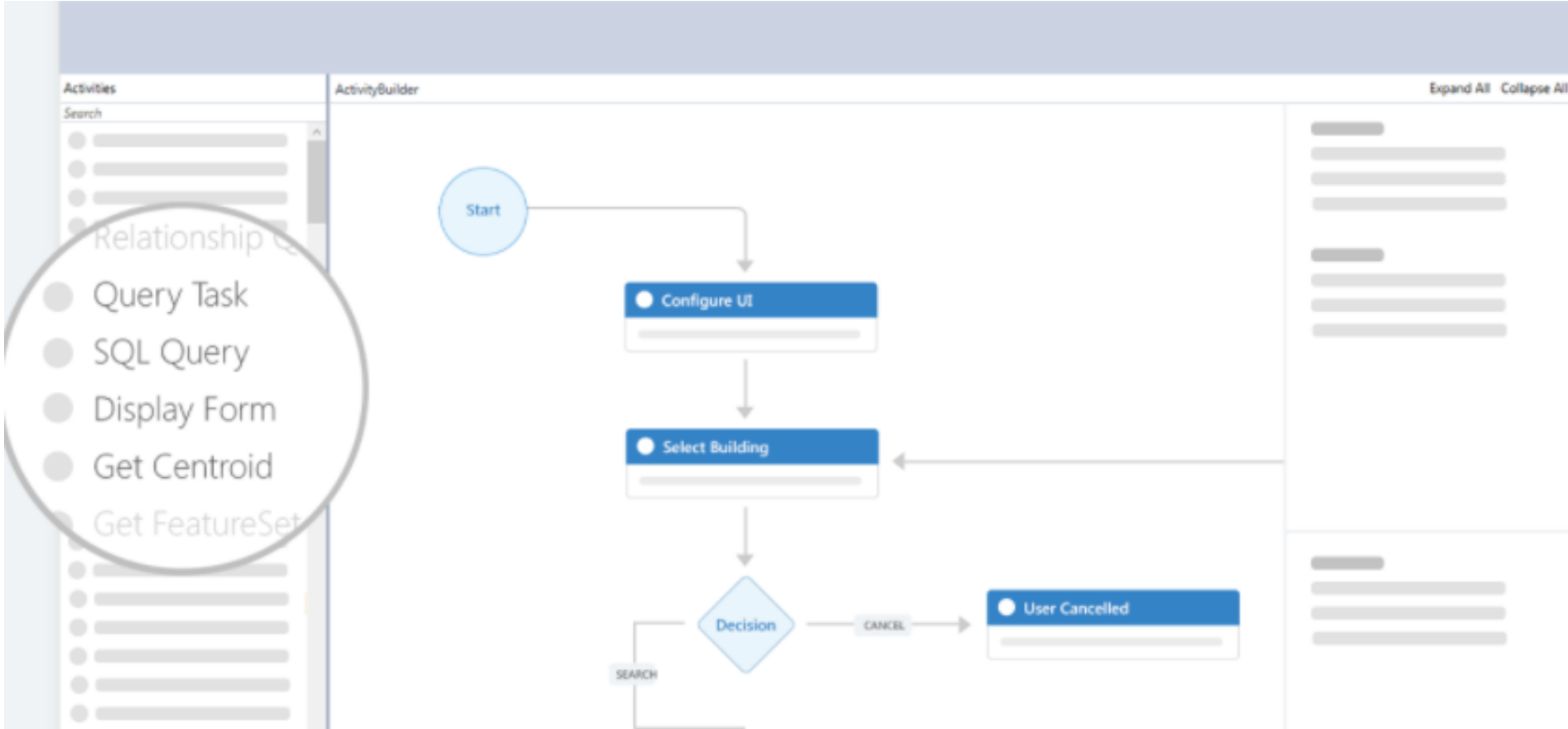
- Reason: *
- Starting: X
- Ending: X
- Type: *

The map shows an aerial view of a street with a red line indicating a road closure. A blue search bar at the top of the map contains the text 'I want to...'. The dialog box has an 'Ok' button at the bottom right.

WORKFLOW

[back](#)

10



SECURITY

[back](#)

11

The screenshot shows the ArcGIS Online interface for managing site permissions. On the left, a navigation pane lists various site components: Site Info, Map, Layer Themes, Basemaps, Overview Map, GIS Services, Data Connections, Print Templates, Tables, Workflows, Offline, Permissions (highlighted), and Viewers. The main content area is titled "Permissions" and prompts the user to "Select a user or role to begin". Two users are listed: "ArcGIS Online - User" and "Sam Smith". Below this, a tree view shows permissions for various site components, including Overview Map, Print Templates, Workflows (with sub-items like Search Parcels By ID, Parcel School Search, Parcel Reports, DriveTime, DemographicsQuery, ProfileTool, and Add Numbers), and Viewers. A "Save Site" button is visible in the top right corner of the interface.

Permissions

Select a user or role to begin

ArcGIS Online - User

Sam Smith

Site

- Overview Map
- Print Templates
- Workflows
 - Search Parcels By ID
 - Parcel School Search
 - Parcel Reports
 - DriveTime
 - DemographicsQuery
 - ProfileTool
 - Add Numbers
- Viewers

Save Site Close Site

Geocortex®

Geocortex Essentials wants to access your ArcGIS account information

esri

Sign in to Geocortex

USING YOUR ARCGIS ACCOUNT

Apply Changes

INTEGRATION

[back](#)

12

I want to...

42029366280000

MORRIS
OIL WELL
SEEKER OIL COMPANY INCORPORATED
Total Depth: 1259 ft
Completion: Jan 31, 1986 4:00 PM
Quad Name: Schenect
Survey: G W HAYDEN

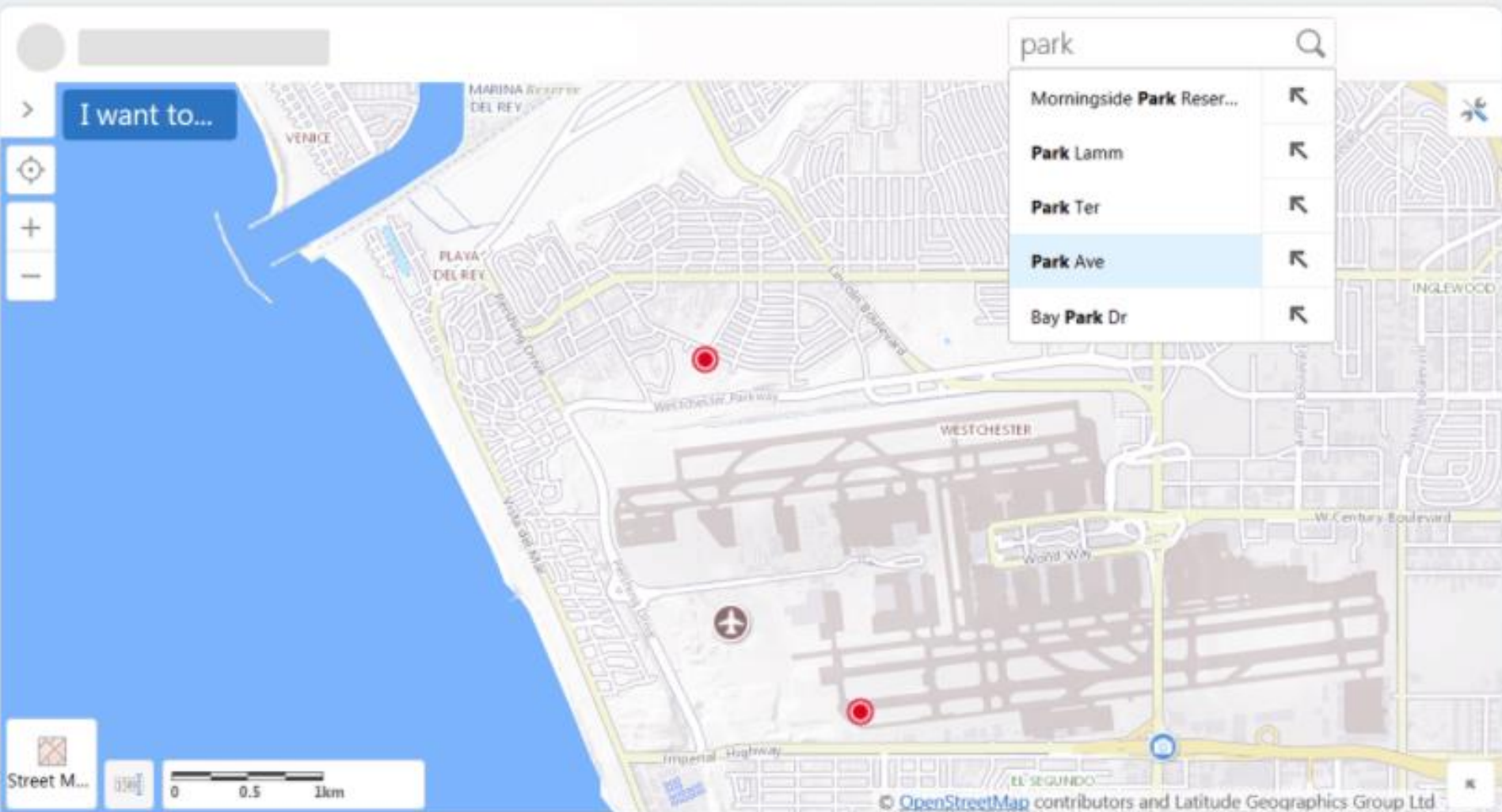
Add to Results | View Additional Details | Run a Report | Edit Feature

Description	Hyperlinks	Details	Inspections						
Inspecting Engineer	Inspection Date	Risk Rating	Tubing Pressure (kPa)	Wellhead Pressure (kPa)	Casing Pressure (kPa)	Leaks or Corrosion	Site Secure	Vent Open	Lease Sign Present
Everett Rollins	Apr 19, 2013 12:00 AM	High	8.218	9.189	9.238	Yes	No	Yes	Yes
Keefe Disney	Feb 12, 2013 12:00 AM	Low	9.189	9.238	8.232	No	Yes	Yes	Yes
Major Jones	Jan 8, 2013 12:00 AM	Med	9.238	8.232	10.516	No	Yes	Yes	Yes
Quincy Becket	Dec 1, 2012 12:00 AM	High	8.232	10.516	9.792	No	Yes	Yes	Yes

SEARCH

[back](#)

13



Project Issues

14

- Sunset strategy
- Project Management
 - Prepare MOU for submission to:
 - NH Attorney General
 - G&C
 - Contract management
 - Project plan development
 - Risk management
 - Schedule maintenance
 - Change control
 - QA/QC
 - Project team & Stakeholder communications

Funding Requirements:

15

18-month pilot

Category	Estimated Cost
Personnel	\$58,943
Software Licensing	\$32,400
Training	\$14,345
Technical Support	\$4,140
Travel	\$680
Facilities & Administrative (35.2%)	\$38,899
Total	\$149,408